

THE PACIFIC BASIN MUSIC FESTIVAL



E x p l o r e T h e W o r l d W i t h M u s i c

World Projects Corporation is proud to present

The 35th Annual PACIFIC BASIN MUSIC FESTIVAL *INSTRUMENTAL Prospectus* March 21-27, 2020

Dear Music Educators and Group Administrators:

Aloha and Mahalo to you for considering the PACIFIC BASIN MUSIC FESTIVAL as your music performance tour in 2020! This will be the festival's 35th anniversary, which over the years has earned the reputation of being the finest educational music festival in the Pacific Islands.

The Pacific Basin Music Festival is an international event, bringing together the most talented junior high, high school, community, and college level bands and choirs from countries of the Pacific Basin and beyond. Festival activities include adjudicated and outdoor group performances, a full ensemble workshop and group reading exchange, a luau, a dinner dance, and a visit to the Arizona Memorial. One adjudicated ensemble will also be selected to work with the festival's composer-in-residence to develop a commissioned work that will be premiered at Hawaii Theatre. With groups attending from countries such as Australia, Canada, Germany, Japan, New Zealand, Singapore, South Korea, Taiwan, Tonga, the United States, and the territory of Guam, this is a unique opportunity for international exchange through social functions and music. Students and directors will have access to outstanding international educators, conductors, and clinicians in a positive and meaningful environment.

Thanks to the vision of its founder Mr. Robert Lutt, who was a highly respected music educator in his own right, this innovative and much needed Festival became a reality in 1985. And today, it continues to foster the same spirit of cooperation and communication through music education, which was Mr. Lutt's goal 35 years ago.

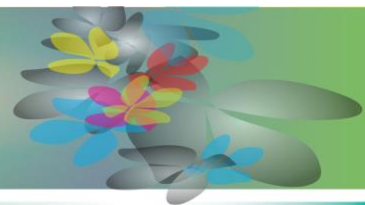
We invite you to discover the "Aloha Spirit" as we continue this gathering of peace and understanding through the language of music. Please contact any of our offices worldwide if we can be of further assistance in making this journey a reality for *your* group!

Aloha,

Deborah Lee Gibbs
CEO

World Projects Corporation





2020 Pacific Basin Music Festival – Instrumental Preliminary Schedule

(Itinerary subject to change)

Note: A trip to Pearl Harbor is included and will be scheduled where convenient.

DAY ONE: Saturday, March 21, 2020 – HONOLULU ARRIVAL

Morning / Afternoon Groups arrive into Honolulu and receive a traditional Hawaiian lei greeting! Transfer to the hotel in Waikiki.
A World Projects staff member will meet you at the hotel to assist with check in (*or baggage storage if arrival is before the hotel's check in time*).
Enjoy some free time and lunch on own.

Evening Dinner on own, or it may be arranged through World Projects. The group director and representatives will be invited to attend the Directors' Orientation Meeting followed by a Directors' Reception at the 'Alohilani Resort (*formerly Pacific Beach Hotel*).



DAY TWO: Sunday, March 22, 2020 (D) – Rehearsals / Outdoor Performances

Morning Breakfast on own (*group breakfast may be arranged for an additional cost*).
This morning, group **rehearsals** will take place at the 'Alohilani Resort.

Afternoon Lunch on own. The Outdoor Concert Series begins this afternoon. Some groups will have an **outdoor performance**. Groups not scheduled to perform today will have free time to explore beautiful Waikiki.

Evening Return to your hotel to dress for the evening. Attend the Festival Welcome Dinner Dance! Throughout the evening, enjoy a plated dinner, as well as some live traditional Hawaiian music. This will be your opportunity to meet students from all over the Pacific Rim!



DAY THREE: Monday, March 23, 2020 – Workshops / Outdoor Performances / Rehearsal Exchanges

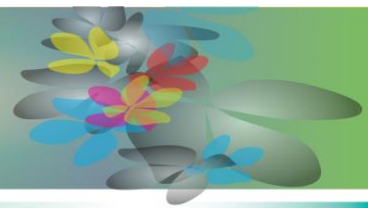
Morning Breakfast on own.
Enjoy a group **workshop** with Festival Faculty at the 'Alohilani Resort either this morning or this afternoon.

Afternoon Lunch on own. The Outdoor Concert Series continues through this evening. Groups that did not previously perform here will do so today.
This afternoon, you will have the opportunity to participate in a group **rehearsal exchange** with an ensemble from another state or country! Groups will play each other's music in an informal rehearsal setting.

Evening Dinner on own, or it may be arranged through World Projects.



THE PACIFIC BASIN MUSIC FESTIVAL



E x p l o r e T h e W o r l d W i t h M u s i c

DAY FOUR: Tuesday, March 24, 2020 – Adjudicated Performance

Morning Breakfast on own.
Meet at the ‘Alohilani Resort with instruments.
Groups will have a sound check in the ballroom.

Afternoon Lunch on own. Return to the ‘Alohilani Resort for **Adjudicated Performances** in the ballroom.

Evening Dinner on own, or it may be arranged through World Projects. **Adjudicated performances** continue this evening in the ballroom of the ‘Alohilani Resort.



DAY FIVE: Wednesday, March 25, 2020 (L) – Festival Luau / Command Performance Concert

Morning Breakfast on own.
Morning is free for time on own.

Late Morning Meet in the hotel lobby. Transfer to the Amphitheatre at the Waikiki Shell (or similar) for the Festival Farewell Luau. Upon arrival, all groups will be assembled for the mass festival photograph.

Afternoon Enjoy a buffet lunch and fun activities (*such as Polynesian dancers*) during the luau. Following the luau, return to the hotel.

Evening Dinner on own. Assemble in the hotel lobby and load coaches. Transfer to the **Festival Command Performance Concert** at Hawaii Theatre. Return to the hotel after the concert.



DAY SIX: Thursday, March 26, 2020

Morning Breakfast on own.
Groups staying five nights will check out of the hotel and transfer to the airport.
For those staying longer, the day is free to enjoy Honolulu and the island on own or to enjoy one of the optional excursions offered by World Projects (*such as the Polynesian Cultural Center, Hawaiian Waters Adventure Park, Diamond Head, a dinner cruise along the Waikiki coastline, and whale watching – additional costs apply*).

Afternoon/Evening Free time to enjoy Honolulu with lunch and dinner on own.

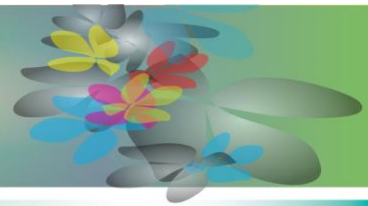


DAY SEVEN: Friday, March 27, 2020 – HONOLULU DEPARTURE

Morning Breakfast on own.

Morning / Afternoon Groups staying six nights will be checking out today. Load coaches and transfer to Honolulu International Airport. Say goodbye to this island paradise!

Thank you for participating in the 2020 Pacific Basin Music Festival!



Organization

World Projects Corporation, located in Benicia, California, founded the PACIFIC BASIN MUSIC FESTIVAL in 1985. Ms. Deborah Lee Gibbs is Chief Executive Officer and sole owner of the company.

World Projects Mission Statement

With music education as our priority, World Projects provides musicians with life changing performance opportunities and cultural exchange through travel.

Festival Facilities

The PACIFIC BASIN MUSIC FESTIVAL utilizes a number of facilities in Honolulu, including the ‘Alohilani Resort, Waikiki Shell, and the Hawaii Theatre. The outdoor performance will be held at Ala Moana Shopping Center’s “Center Stage”, the Aloha Tower Marketplace Atrium, Kapiolani Bandstand or similar.

Festival Adjudicated Concerts

Each ensemble at the 2019 PACIFIC BASIN MUSIC FESTIVAL will be allowed a maximum of 20 minutes of performance time at the Festival Adjudicated Concerts. Our esteemed panel of adjudicators will critique your performance and offer recorded comments, which are given to the director at the conclusion of the concert. **Each group must submit three copies of original scores for each piece of music being adjudicated.**

Festival Awards

Based on the performance level as perceived by the adjudication panel, each group will receive a Gold, Silver, or Bronze award. There is no limit to the number of Gold, Silver, or Bronze awards.

Command Performance

Following the adjudicated concerts, our faculty will select one instrumental group and one choir to perform at the Festival Command Performance Concert held in Hawaii Theatre the following evening. The ensembles selected for this honor best represent the spirit, enthusiasm, and camaraderie of the Festival.

Full Ensemble Workshops

Each ensemble will receive a one-hour coaching session from a guest conductor at PBMF, using a private rehearsal format. Generally, this session will use the group’s festival music during the workshop. Directors will have ample opportunity to discuss the content of these sessions with the clinician prior to the workshop.

Group Rehearsal Exchange

Each participating instrumental group will have the opportunity to experience a musical and cultural Group Rehearsal Exchange with a band from a different region. In the past, these exchange rehearsals had been arranged on a case-by-case basis only but have proven so enriching that they are now part of each group’s festival schedule. Groups will be able to play each other’s music in an informal rehearsal session lasting 80 minutes.

Outdoor Concert Series

Every group participating in PBMF will have the opportunity to perform as part of the festival’s Outdoor Concert Series. Past venues have included Ala Moana Shopping Center’s “Center Stage”, the Aloha Tower Marketplace Atrium, and the Kapiolani Bandstand. This outdoor concert is informal, allowing ensembles to perform “lighter” music if desired. Each ensemble will be given a maximum performance time of 45 minutes for this concert. Groups with multiple ensembles will share a concert at their outdoor performance.



Ask for our World Premiere Application!

World Projects is thrilled to continue our New Music Initiative with composers from across the United States! Continuing in 2020, one commissioned piece will be World Premiered at the Pacific Basin Music Festival. The selected adjudicated ensemble will have the opportunity to participate in the development of the commissioned work, as well as the honor of performing this World Premiere at Hawaii Theatre. In addition, the composer will be at the festival to work with the group on the commissioned piece at a 90-minute rehearsal prior to their adjudicated performance as well as attend the World Premiere. A separate application process is available to participating adjudicated ensembles interested in this opportunity.

Limited Participation

In order to ensure a quality experience, the festival is generally limited to a maximum of ten (10) participating instrumental groups. Groups that are denied entry based on available festival capacity will be given first priority in the following year (unless an organization is denied based on its music submission). Once accepted, space for a group can only be guaranteed upon receipt of the non-refundable deposit (see *Payment and Cancellation Schedule*).

Jazz Bands

Although jazz bands cannot be scheduled for adjudicated festival performances, these students are welcome to accompany the group and participate in all other educational and cultural activities during Festival Week. On a case-by-case basis, these adjunct groups may have the opportunity to perform as part of the festival's Outdoor Concert Series.

Length of Stay

To ensure that students receive maximum educational benefit from the festival, all participating groups are asked to arrive in Honolulu in time for the Festival Orientation (Day One) and remain until at least Day 5. Extra days in Honolulu can be arranged for your group either before or after the main festival dates.

Chaperones

World Projects requests all youth groups in attendance have approximately **one adult chaperone for every eight to ten students**. Chaperones must stay in the same hotel as students, taking one of the participant packages offered as part of the group tour. Please check your school's chaperone requirements as well.

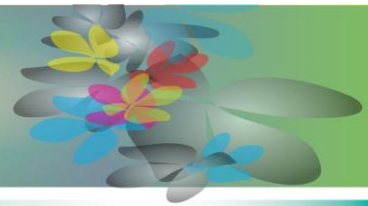
Social Events

PBMF hosts a Welcome Party, which is a semi-formal dinner with entertainment for all participants. A formal ballroom is used, with students receiving random seating assignments, allowing them to meet students from other schools and nations. The evening fills out with staff introductions and Hawaiian music and dance.

A Festival Luau is also held for all participants at the end of the festival and includes a buffet lunch, hula contest, and Polynesian Review.

Festival Directors' Reception

A Festival Directors' Reception will be held on Saturday, March 21, 2020. Directors, faculty, and staff will have an opportunity to meet and talk with educators from the various regions represented in an informal setting. We encourage the group directors to invite three (3) additional representatives from their group to attend and participate. Representatives must be over the age of 21.



Meal Arrangements

The Pacific Basin Music Festival includes a Welcome Dinner and a Farewell Luau Lunch. Additional group meals can be arranged at a variety of restaurants around Waikiki. Some of the hotel options also have options for booking either group breakfasts or group dinners. Please contact your World Projects representative for more information on what options are available.

Air Travel Arrangements

Air travel to and from the Pacific Basin Music Festival can be arranged by World Projects at competitive market rates. For round-trip air travel from your area to Honolulu, contact the World Projects Headquarters office toll free (800) 922-3976 or from out of the US +1 707 556 5885.

Additional Information

- ◆ The scheduled Faculty and Composer-in-Residence for 2020 will be announced in September of 2019 (subject to change).
- ◆ Please note that walking to and from festival venues may be required.
- ◆ The weather in Honolulu during the last week of March is normally quite warm with highs around 80° F and low temperatures around 68° F. As it is still spring there is a good chance of passing rain showers, but usually these pass quickly and are quite brief.

Festival Application Procedure

Send a completed application form (*attached*) and a recent audio or video recording that is representative of your performance level to: Pacific Basin Music Festival, 601 First Street, Suite 200, Benicia, CA 94510 USA. The recording should be indicative of your group's performance level and festival repertoire.

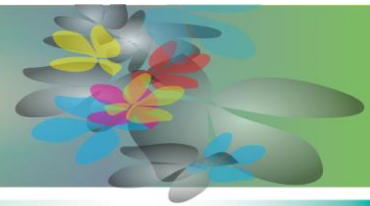
The deadline for application for the 2020 festival is November 1, 2019. Each band or orchestra accepted for participation will be required to submit a US \$2,000.00 non-refundable deposit in order to hold space in the festival (which will be applied to the final invoice). Ensembles will be admitted based on their audition submission and on a space available basis until the festival is full. A band or orchestra may be accepted into the festival after the application deadline with the approval of the Festival Director.

Director's Information Packet

A Director's Information Packet will be mailed to all accepted and deposited groups. This packet will contain more detailed information regarding the Festival, as well as forms to be completed by each group and returned to *World Projects* headquarters.

Festival Participation Agreement

Once the group deposit has been received, World Projects will require the group leader to sign a Group Performance Agreement which outlines the terms and conditions including tour costs, inclusions/exclusions and Payment and Cancellation Schedule. Additionally, all travelers will be required to submit signed liability waivers and medical authorization forms as issued by World Projects in order to participate in the festival.



Ground Package Inclusions

- ◆ Five (5) nights or Six (6) nights of hotel accommodation (includes taxes and portage)
- ◆ One gratis ground package for every 20 paid participants based on double occupancy rate
- ◆ Lei greeting and airport transfers for group and equipment
- ◆ All required group coach transportation during festival to Outdoor Performance, Pearl Harbor, and Hawaii Theatre
- ◆ Festival Welcome Party (includes dinner)
- ◆ Festival Directors' Reception
- ◆ Festival Farewell Luau (includes buffet lunch)
- ◆ One (1) workshop per group with Festival faculty
- ◆ One (1) rehearsal per group
- ◆ One (1) group rehearsal exchange
- ◆ Festival performance and recorded adjudication comments
- ◆ Festival recording
- ◆ PBMF Outdoor Concert Series Performance
- ◆ Visit to Pearl Harbor and USS Arizona Memorial
- ◆ Official Festival Souvenir Program
- ◆ Official Festival T-shirt
- ◆ Group Award Plaque
- ◆ Souvenir print of Festival Luau Photo for each group
- ◆ Festival registration fees
- ◆ Access to all Festival concerts & events
- ◆ Official Festival photographer at adjudicated performance venue and luau (prints available for order)
- ◆ Large instruments & equipment as noted: Conductor's Podium, Piano/Keyboard, Two (2) String Basses, Timpani (set of 4), Concert Bass Drum, Marimba, Xylophone, Vibraphone, Chimes (Tubular Bells), Orchestra Bells (Glockenspiel), Tam-Tam
- ◆ Artist Pass Lanyard

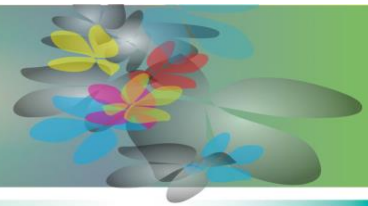
Ground Package Exclusions

- ◆ Airfare (*Available through World Projects – See Air Travel Arrangements*)
- ◆ Meals not mentioned in Inclusions (Opening Party, Closing Luau are included)
- ◆ Rollaway beds
- ◆ Items of a personal nature (laundry, room service, internet connection fees, etc.)
- ◆ Additional instrument rentals (*World Projects can arrange rentals at additional costs*)
- ◆ Additional sightseeing excursions (*World Projects can arrange a variety of Hawaii sightseeing activities which are presented as Optional Sightseeing Activities in the Director's Packet*)
- ◆ Group transfers to non-festival events

Payment and Cancellation Schedule

Date	Payment / Type	Cancellation / Refund
Upon Acceptance	US \$2,000 per group deposit	Non-refundable
November 1, 2019	US \$350 per person	50% refundable to December 15, 2019
February 1, 2020	Balance in Full	50% refundable to February 15, 2020

Note: All payments must be made by school check, bank check or cash – credit cards will not be accepted.



FESTIVAL FREQUENTLY ASKED QUESTIONS

1. Do chaperones / adults / non-performing travelers have to pay the same package costs as the performers?

Yes. In order to keep the cost of participating in the Festival affordable for as many students as possible, World Projects presents a blanket package cost. Creating a reduced rate for non-performers would increase the performer costs significantly, and thus we maintain one cost for all travelers.

2. Does the package cost cover any type of Travel or Medical Insurance?

For United States based groups, World Projects will purchase a Student Protection Plan (post departure) for all travelers. The director will be sent details about the plan. Groups traveling from outside the United States are not eligible for the Student Protection Plan, but are encouraged to purchase a similar post departure trip protection plan where possible. Trip Cancellation insurance is not included but can be arranged through World Projects upon request at an additional cost. Individuals may also receive quotes for Trip Cancellation insurance here: www.world-projects.com/travel-insurance

3. Does World Projects have any type of Liability Insurance?

Yes. According to California State Law, World Projects is required to hold \$3 million Travel Agents Professional Liability Insurance Coverage. This is not a form of Travel, Medical, or Trip Cancellation Insurance for groups—rather a form of insurance coverage for World Projects.

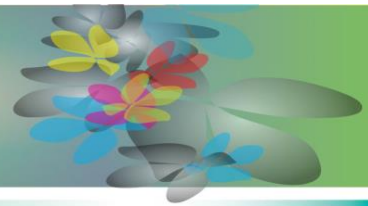
Upon request, World Projects can list your school and/or school district as a ‘co-insured’. A customized Certificate of Liability will then be produced showing your school and/or school district as a co-insured for the event you are attending. For further detailed information, World Projects can provide a copy of the Liability Policy upon request.

4. In the event that my child cannot attend the Festival after making payments, what is the refund policy?

World Projects has put in place a generous cancellation schedule, which can be found in this Prospectus. This schedule outlines the percentage of payments made that are refundable and until when. All cancellation charges (if any apply) will be represented on your group’s final invoice.

When cancellations occur, our first recommendation is that a replacement is found to take the cancelled traveler’s spot on the tour. That way, all finances can be dealt with internally at the school or organization, and cancellation fees need not be assessed (unless air transportation is involved).

World Projects does, however, acknowledge that unforeseen circumstances do arise and will be reviewed on a case-by-case basis. In the event of a death in the family or illness/injury that prevents travel (as examples), World Projects will review what monies can be recovered from outside vendors (such as airlines, hotels, etc.). These vendors establish their own cancellation schedules, which World Projects must adhere to.



5. When do I need to submit rooming lists, repertoire, and other information about my group?

About six months out from the event (or after this date for late applicants), World Projects will send you a Director's Packet. Included in this packet are a number of forms we have created to make submitting necessary information to us as simple as possible. World Projects customizes each Director's Packet so only the forms that apply to your group are included. We ask that these forms be returned to us approximately 3-4 months out of an event, allowing us enough time to make all of the arrangements for your festival experience. We do understand that changes may occur after information is submitted and will try to accommodate changes when possible.

6. I want all of my students to be in quad rooms; however, after putting together my rooming list I've discovered I have an odd number of students left over. Can they stay in a triple, double, or single room at the quad rate?

World Projects has created four different packages based on the different rooming configurations. Unfortunately, in this type of forced rooming situation, World Projects cannot make concessions for the package rates. What we recommend is that the additional cost of these packages compared to the quad rate be prorated among the paying travelers. This generally works out to be a very small additional cost per person.

7. Can World Projects organize any sightseeing activities or meals for my group outside of the Festival Package? Can we arrange sightseeing ourselves?

Yes. World Projects will supply you with an 'Optional Sightseeing Activities' form in the Director's Packet. This form will include a number of popular sightseeing activities in the Festival city and the additional costs. Once you have selected the activities you wish to enjoy, World Projects will arrange these tours for your group around your Festival commitments.

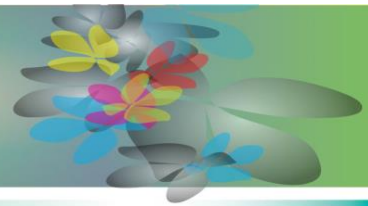
Should you wish to partake in a sightseeing activity not listed on the form, World Projects will research costs and present these to you. All additional costs for optional sightseeing activities will be represented on your group's final invoice.

You are also welcome to make your own sightseeing arrangements for your group or for individual travelers. However, World Projects does request that we are informed of the date and times of your group sightseeing activities to ensure that there are no conflicts with your Festival commitments.

8. Can World Projects arrange air travel for my group? If so, how does this work?

World Projects will be able to provide competitive quotes and prompt service to all of our clients requesting air costs.

World Projects will make all of the initial inquiries on your behalf, and should you decide to take any of the quotes offered, we will act as your representative on all aspects of your air transportation including the names list, equipment list, etc. World Projects will invoice you separately for airfare related costs.



9. Can you explain the invoicing process to me in further detail?

Upon acceptance, each performing group will be invoiced for the \$2,000 nonrefundable deposit which secures your position in the Festival.

The next payment request is a per person progress payment. World Projects will invoice you for the total number of travelers indicated in recent correspondence or on your Festival application form. This total number of travelers invoiced will include any applicable gratis travelers. The value amount of a gratis package (the cost of a double occupancy package) will be credited to your final invoice.

The Final Invoice will show a detailed breakdown of all costs associated with your tour (including the rooming summary, any optional sightseeing or meals, and any applicable cancellation charges). Your final balance due will be based on these calculations. Any additions to your tour after the final invoice has been created and sent will be billed on a Supplemental Invoice.

10. Can World Projects organize additional equipment for our group to use during the Festival (i.e. string bass, additional percussion, etc.)?

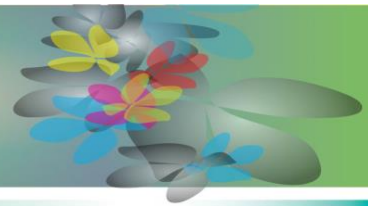
Depending on the availability of the instrument(s) requested, World Projects can arrange the rental of extra instruments not provided by the Festival at an additional cost. In some cases, there may be other ensembles that are also in need of the same additional equipment. In this instance, World Projects can often split the additional equipment cost between ensembles. Please contact the Festival Operations Manager with your requests as early as possible.

11. At what point can we expect a personalized itinerary for our time during the Festival?

The itinerary shown in the Prospectus acts as a guide for what you can expect during the event. After your progress payment has been received, World Projects will send you a draft individual schedule, which will give you a better idea of your group's movements during the event.

From this point on, the Festival Operations Manager will continue to update your group's schedule with new information such as exact performance, workshop, and meal times, venues, etc. Before you depart for the Festival, you will have a FINAL itinerary for your time during the event.

THE PACIFIC BASIN MUSIC FESTIVAL



E x p l o r e T h e W o r l d W i t h M u s i c

PACIFIC BASIN MUSIC FESTIVAL OFFICIAL APPLICATION FORM

NOTE: Applications close on November 1, 2019 or when the Festival is full.

Please circle the type of ensemble applying to participate
(A separate application form must be submitted for each ensemble applying):

Wind Ensemble Concert Band Orchestra Other

Please indicate the year your group wishes to participate: 2020 2021

Name of School/Organization: _____

Name/Type of Ensemble: _____

Name of Director (with title): _____

Address of Ensemble: _____ City: _____

State or Province: _____ Postal Code: _____ Country: _____

Telephone: _____ Facsimile: _____ E-mail: _____

Number of Participants

Performers in Ensemble: _____

Directors: _____

Staff: _____

Administrators: _____

Chaperones: _____

Total Number of Participants: _____

Hotel Preference: 1st _____ 2nd _____ 3rd _____

Previous festivals and tours attended by group: _____

Recent repertoire: _____

Please send the following items with this application:

- 1. Recent audio or video recording (CD or DVD will be accepted)**
- 2. Any copies of previous adjudication or judging forms (if available) OR a current repertoire list.**

If accepted, a non-refundable deposit of US \$2,000.00 per group made payable to WORLD PROJECTS is required to hold space in the Festival.

Signatures: _____

Group Director

School Principal or Group Administrator

Date: _____

Date: _____



Please return this form and all materials to: Pacific Basin Music Festival
World Projects Corporation
601 First Street, Suite 200
Benicia, CA 94510 USA